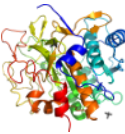




SCOPe Funding Alert: SCOPe support from the NIH ended in April 2016. John-Marc Chandonia is the primary maintainer and has continued to develop SCOPe using vacation time. Three proposals to the NIH for continued funding have been unsuccessful. If our current NIH proposal is not funded, **SCOPe will shut down permanently in Summer 2017** as Dr. Chandonia will need to seek a new position.

Lineage for d1t1ga_ (1t1g A:)

1. Root: SCOPe 2.06
2. Class c: Alpha and beta proteins (a/b) [51349] (148 folds)
3. Fold c.41: Subtilisin-like [52742] (1 superfamily)
3 layers: a/b/a, parallel beta-sheet of 7 strands, order 2314567; left-handed crossover connection between strands 2 & 3
4. Superfamily c.41.1: Subtilisin-like [52743] (3 families) \mathcal{S}
5. Family c.41.1.2: Serine-carboxyl proteinase, SCP [52764] (2 protein domains)
elaborated with additional structures
6. Protein Serine-carboxyl proteinase, SCP [52765] (3 species)
7. Species *Bacillus novosp.* MN-32, kumamolisin [TaxId:198803] [75226] (7 PDB entries)
Uniprot Q8RR56 ! Uniprot Q8RR56
8. Domain d1t1ga_: 1t1g A: [106246]
complexed with ca, so4; mutant



Details for d1t1ga_

PDB Entry: 1t1g (more details), 1.18 Å

PDB Description: High Resolution Crystal Structure of Mutant E23A of Kumamolisin, a sedolisin type proteinase (previously called Kumamolysin or KSCP)

PDB Compounds: (A:) kumamolisin

SCOPe Domain Sequences for d1t1ga_:

Sequence; same for both **SEQRES** and **ATOM** records: (download)

```
>d1t1ga_c.41.1.2 (A:) Serine-carboxyl proteinase, SCP {Bacillus novosp. MN-32, kumamolisin [TaxId: 198803]}
aaptaytpldvaqayqfpegldggqciaialgggydetslaqyfaslgsapqvsvs
vdgatnqptgdpngpdgeveIdievagalapgakiavyfapntdagfInaittavhdpth
kpsivsiwggpedswapasiamnrafldaalgvtvlaaagdsgstdeqdglyhvdf
paaspvylacgtrlvasagrieretvwndgpdggstgggvsrifplpswqeranvppsa
npgagsgrgvpdvagnadpatgyevvidgettvggtsavaplfaalvarinqkkgkpvq
ylnptlyqlppevfhditegnndianrariyqagpdpctglgspigirllqallp
```

SCOPe Domain Coordinates for d1t1ga_:

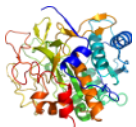
Click to download the [PDB-style file with coordinates for d1t1ga_](#).

(The format of our PDB-style files is described [here](#).)

Timeline for d1t1ga_:

- d1t1ga_ first appeared in SCOP 1.69
- d1t1ga_ appears in SCOPe 2.05

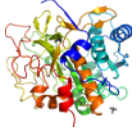
Thumbnails for d1t1ga_:



d1t1ga_

(click for larger image)

View in 3D



d1t1ga_ in context of chain

View in 3D

